



**ITALSTYL**  
*Collection*

Le cornici estruse in polistirene  
Polystyrene extruded mouldings  
Extrudierte Zierprofile aus Polystyrol  
Molduras de poliestireno extruido

**BOVELACCI**

# ITALSTYL

## LE CORNICI ESTRUSE PER SOFFITTI

Cornici in polistirene estruso  
Lunghezza: 2 ml per asta  
Angoli in polistirene espanso

## EXTRUDED CEILING MOULDINGS

Extruded ceiling mouldings  
Length: 2 lm  
Expanded PS corner blocks

## EXTRUDIERTE LINEARE ECKLEISTEN

Extrudierte Zierprofile aus Polystyrol  
Länge: 2 Meter  
Ecken aus expandiertem PS

## LAS MOLDURAS EXTRUIDAS DE TECHO

Molduras de poliestireno extruido  
Longitud: 2 ml por barra  
Elementos angulares de poliestireno expandido



1725-S25



IA725I



IA725E



1735-S35



IA735I



IA735E



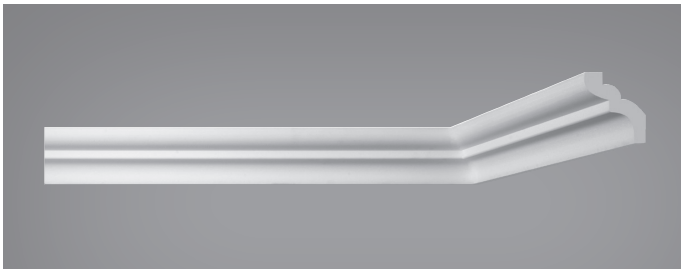
1755-S50



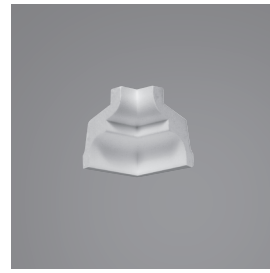
IA755I



IA755E



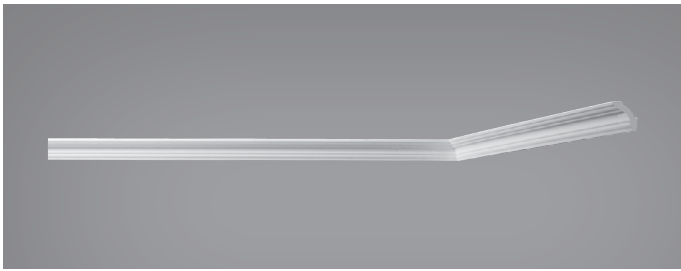
I785-S80



IA785I



IA785E



I741-A30



IA741I



IA741E



I743-A40



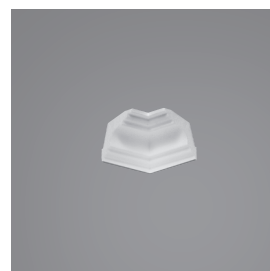
IA743I



IA743E



I750-A50



IA750I



IA750E

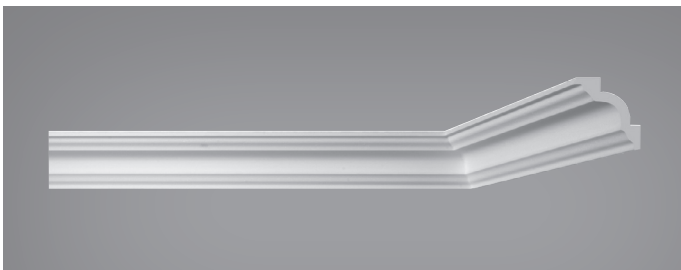
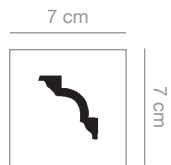
# ITALSTYL



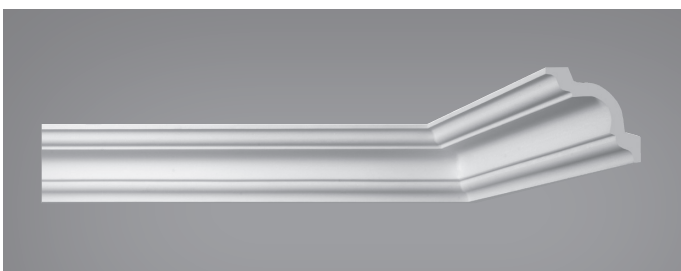
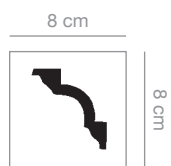
I768-A60



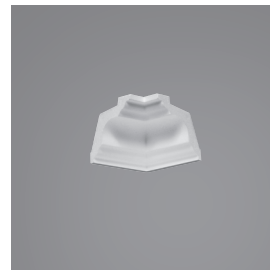
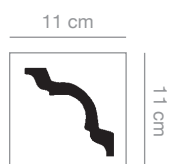
I778-A70



I780-A80



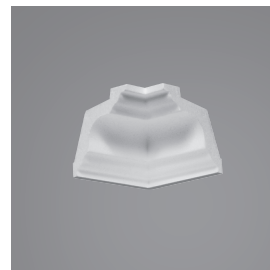
I790-A110



IA778I



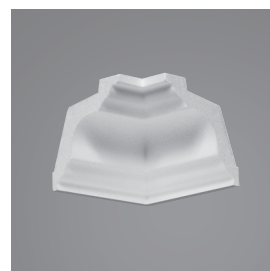
IA778E



IA780I



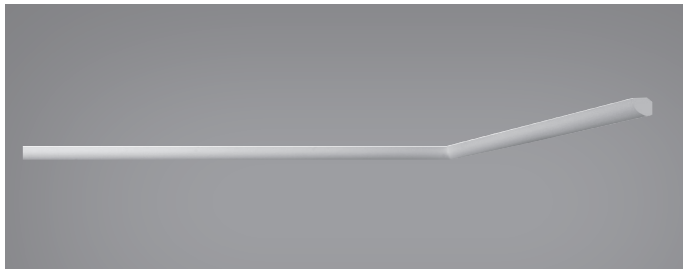
IA780E



IA790I



IA790E



I715-D20



IA715I



IA715E



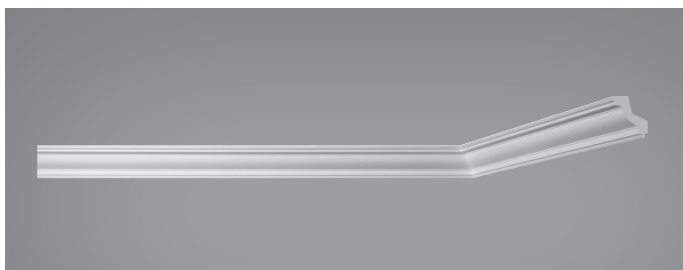
I702-J30



IA702I



IA702E



I703-J45



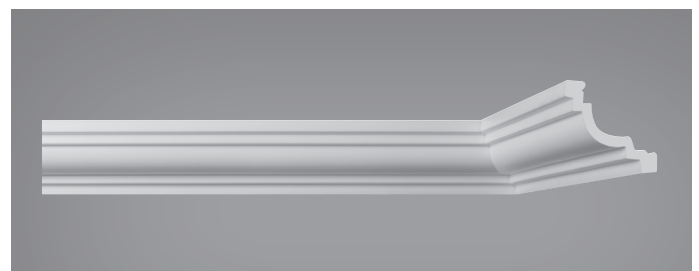
IA703I



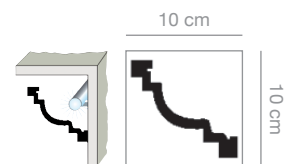
IA703E



I716-J20



I776\*-J100

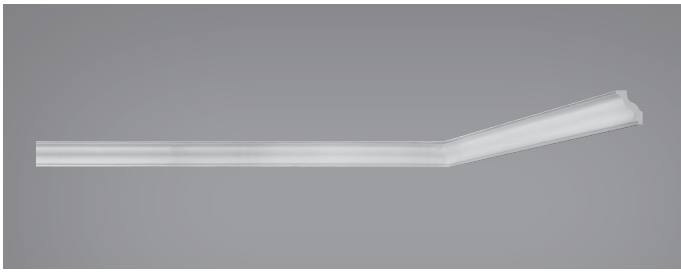


\* Indicato anche per illuminazione fredda indiretta.  
Temperatura d'impiego: -20° C ÷ +75° C.

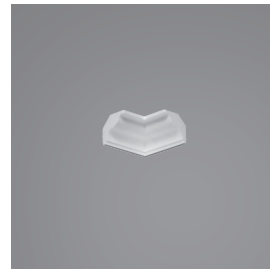
\* Suitable also for indirect cold lighting.  
Operating temperature: -20° C ÷ +75° C.

\* Geeignet für indirekte kalte Beleuchtungen.  
Temperatureinsatzbereich: -20° C ÷ +75° C.

\* Indicado también para la iluminación fría indirecta.  
Temperatura de aplicación: -20° C ÷ +75° C.



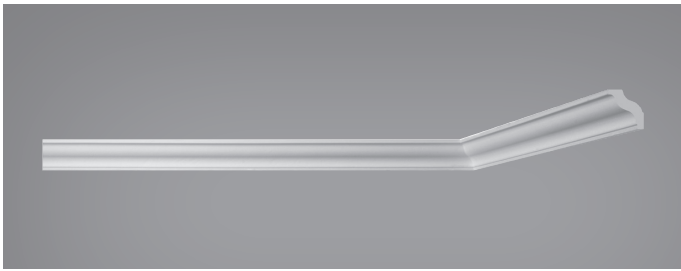
I742-H35



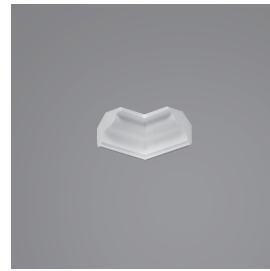
IA742I



IA742E



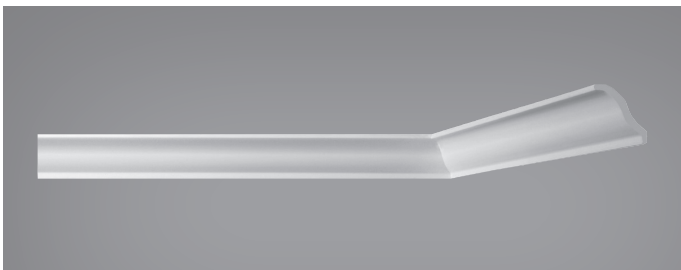
I760-H45



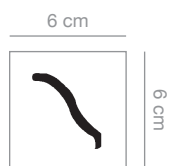
IA760I



IA760E



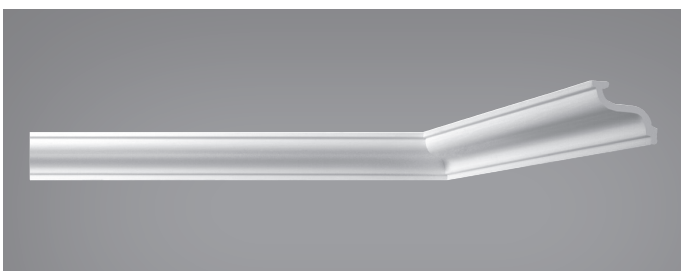
I758-H60



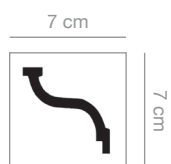
IA758I



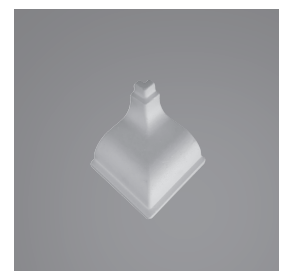
IA758E



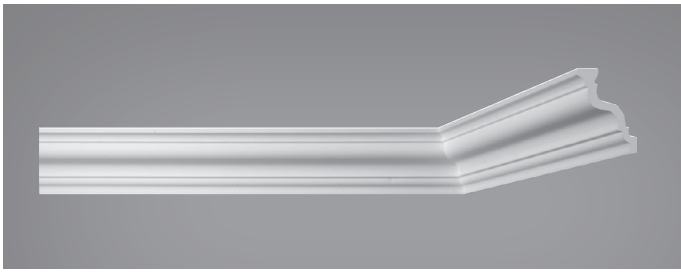
I761-H70



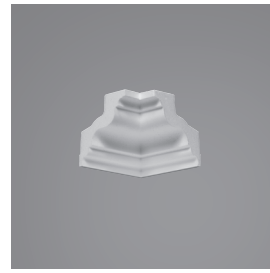
IA761I



IA761E



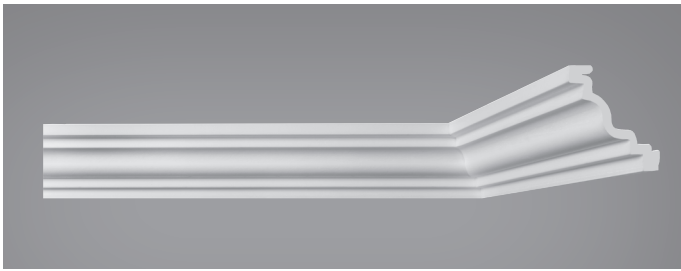
I763-H85



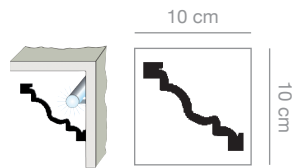
IA763I



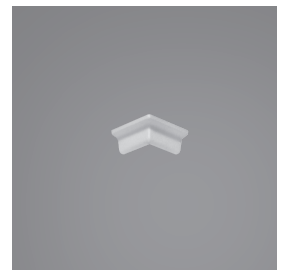
IA763E



I764\*-H100



IA720I



IA720E



I720-D25



IA704I



IA704E

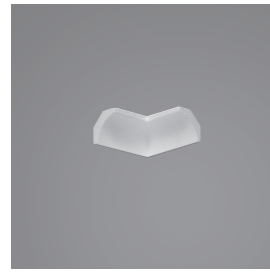


I704-C25





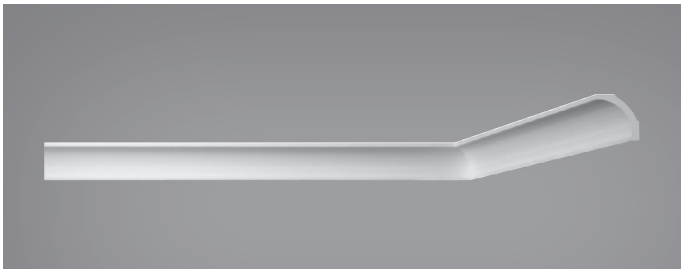
I705-C35



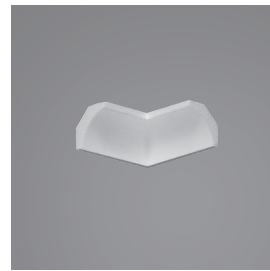
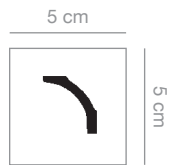
IA705I



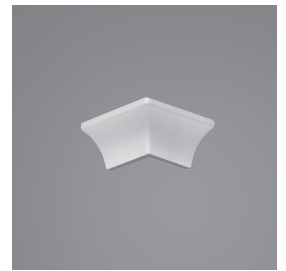
IA705E



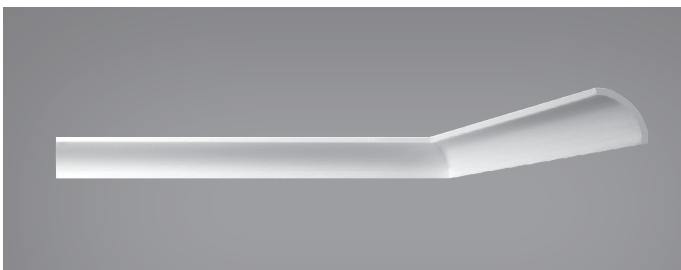
I706-C50



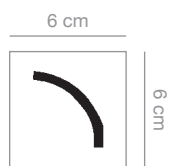
IA706I



IA706E



I762-C60



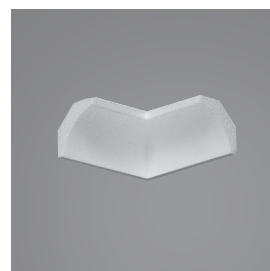
IA762I



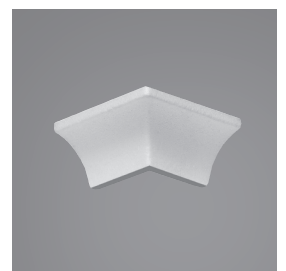
IA762E



I766-C70

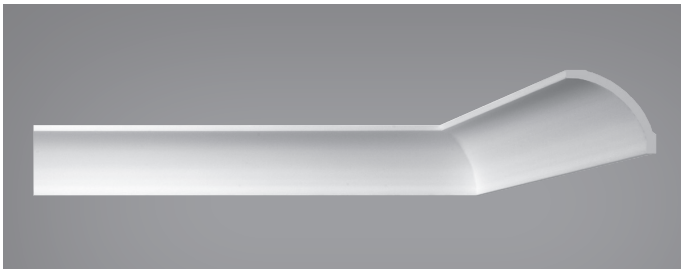


IA766I

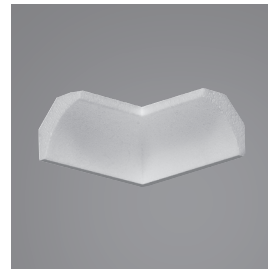
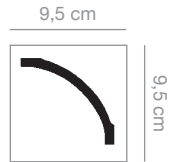


IA766E

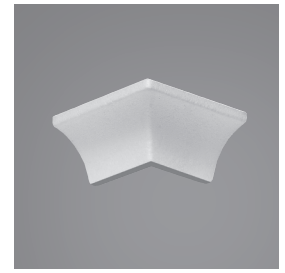




I767-C95



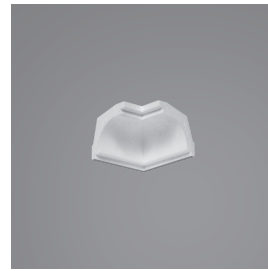
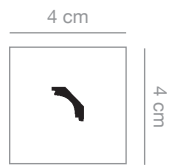
IA767I



IA767E



I747-K40



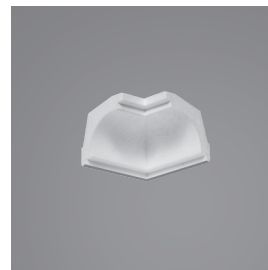
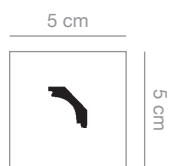
IA747I



IA747E



I707-K50



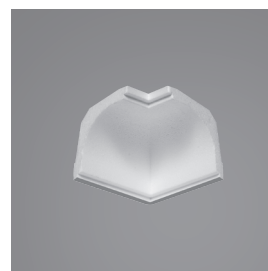
IA707I



IA707E



I765-K70

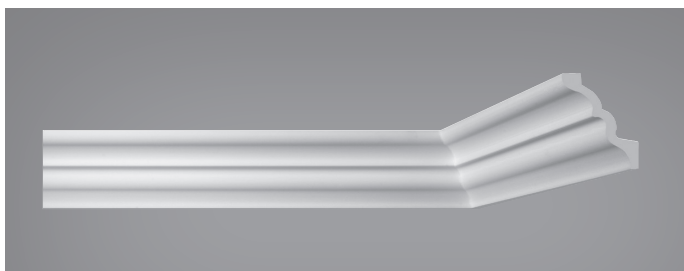


IA765I

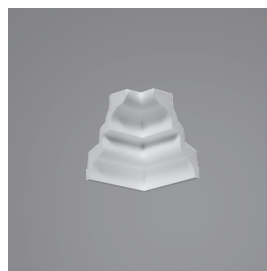
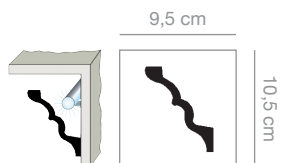


IA765E

# ITALSTYL



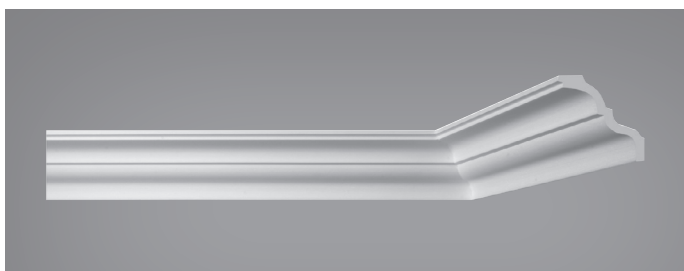
I775\*-S105



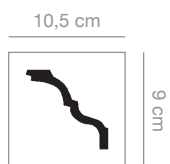
IA775I



IA775E



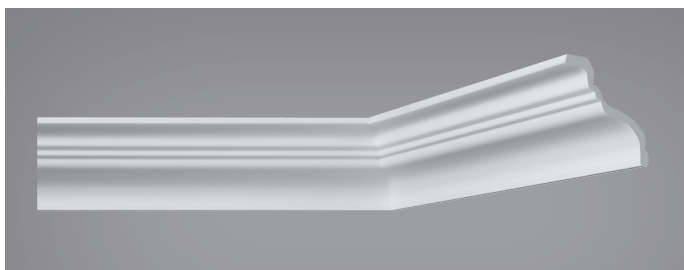
I777-S90



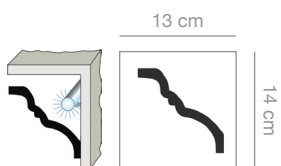
IA777I



IA777E



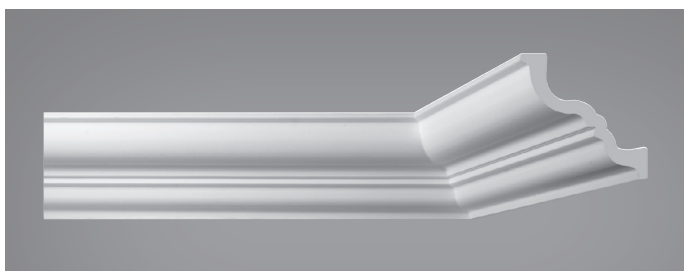
I793\*-R140



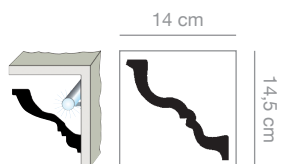
IA793I



IA793E



I795\*-R145



IA795I



IA795E



I737-K20



IA737I



IA737E



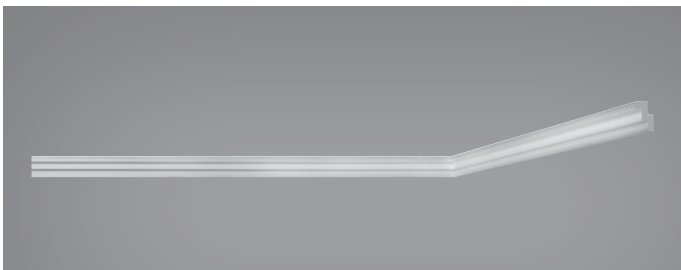
I740-K30



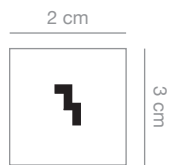
IA740I



IA740E



I717-M30



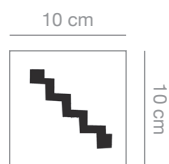
IA717I



IA717E



I779-M100



IA779I



IA779E

# ITALSTYL



I732-Z50



I734-Z80



## Italstyl

LE CORNICI ESTRUSE  
E GLI ANGOLI  
PER PARETI E SOFFITTI

Lunghezza: 2 ml per asta  
Cornici in polistirene estruso  
Angoli in polistirene espanso

EXTRUDED PANEL  
MOULDINGS  
WITH CORNERS

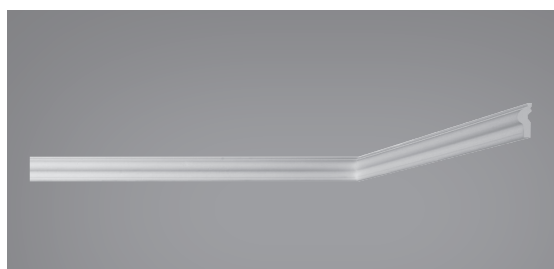
Length: 2 lm (78 <sup>3</sup>/<sub>4</sub> ")  
Extruded panel mouldings  
Expanded PS corner blocks

EXTRUDIERTER  
WANDLEISTEN  
UND BÖGEN

Länge: 2 Meter  
Extrudierte Zierprofile aus  
Polystyrol  
Bögen aus expandiertem PS

LAS MOLDURAS EXTRUIDIDAS  
Y LOS ELEMENTOS ANGULA-  
RES DE PARED Y TECHO

Longitud: 2 ml por barra  
Molduras de poliestireno extruido  
Elementos angulares de  
poliestireno expandido



I709-Q40



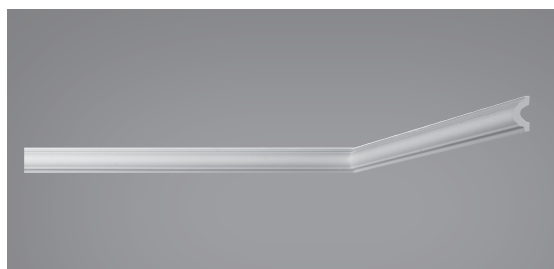
IA709LP  
14,5 x 14,5 - r. 8 cm



IA709LG  
20,5 x 20,5 - r. 12,5 cm



IA709D  
20,5 x 20,5 cm



I745-I40



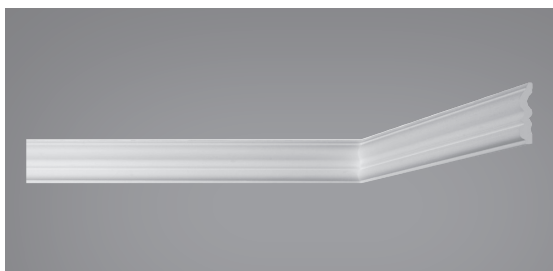
IA745LP  
15 x 15 - r. 8 cm



IA745LG  
20 x 20 - r. 12,5 cm



IA745D  
20 x 20 cm



I770-B70



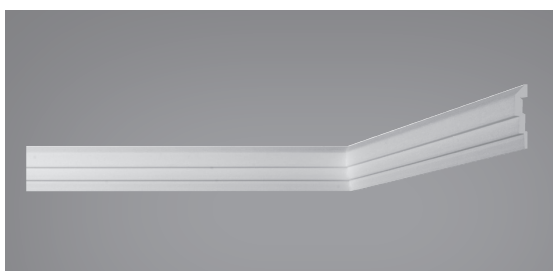
IA770LP  
15 x 15 - r. 8 cm



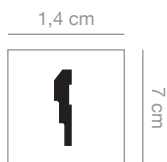
IA770LG  
22,5 x 22,5 - r. 15 cm



IA770D  
22 x 22 cm



I710-I70



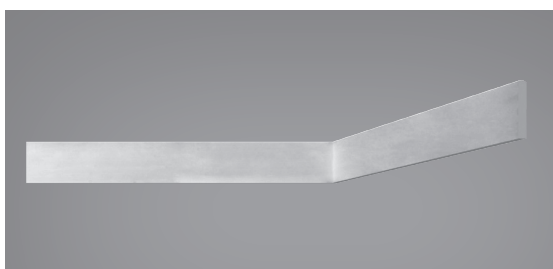
IA710LP  
15 x 15 - r. 8 cm



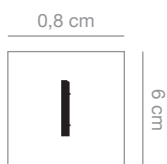
IA710LG  
20 x 20 - r. 12,5 cm



IA710D  
22 x 22 cm



I701-I60



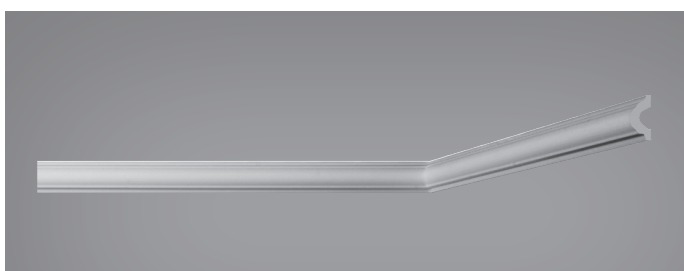
IA701LP  
14 x 14 - r. 6 cm



IA701LG  
20 x 20 - r. 12,5 cm



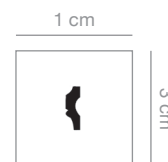
IA701D  
20 x 20 cm



I744-I35

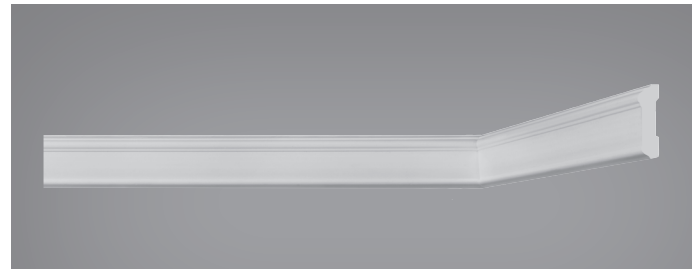


I771-Q30





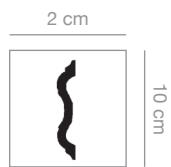
I772-Q35



I773-Q60



I774-B100



I801-I30



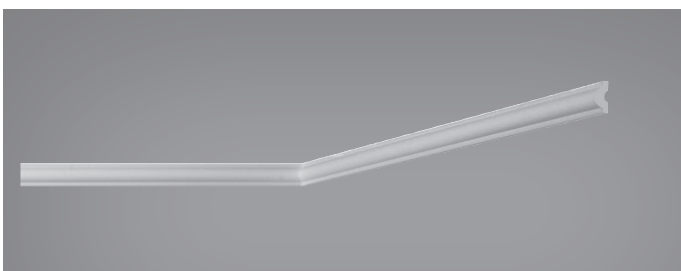
IA801LP  
14 x 14 - r. 6 cm



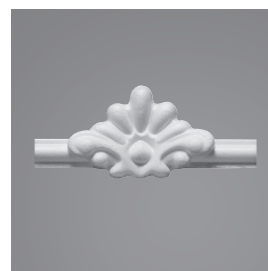
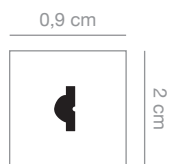
IA801LG  
20 x 20 - r. 12,5 cm



IA801D  
20 x 20 cm



I802-I20



IF802DC  
15,5 x 6,5 cm



IF802DF  
15,5 x 6,5 cm



IA802LG  
18,5 x 18,5 - r. 9 cm  
IT802  
6 x 6 - r. 6 cm



IA802LM  
15,5 x 15,5 - r. 8,5 cm



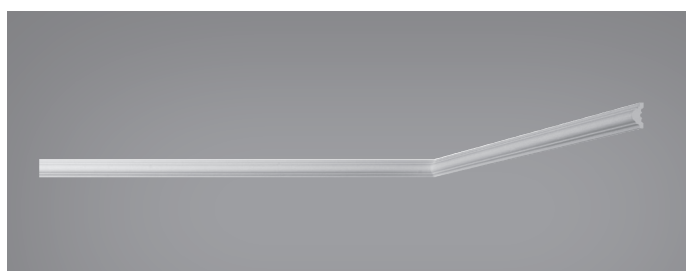
IA802LP  
8 x 8 - r. 4 cm



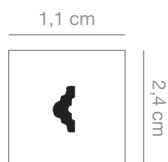
IA802DG  
15,5 x 15,5 cm



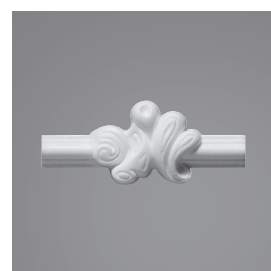
IA802DP  
12 x 12 cm



I803-I24



IF803DC  
15,5 x 7 cm



IF803DF  
15,5 x 6,5 cm



IA803LG  
20 x 20 - r. 11,5 cm  
IT803  
9 x 9 - r. 9 cm



IA803LM  
15,5 x 15,5 - r. 8,5 cm



IA803LP  
10,5 x 10,5 - r. 5 cm



IA803DG  
15,5 x 15,5 cm



IA803DP  
10,5 x 10,5 cm



ERF803/52DG  
L.43 x p. 3,5 x H. 36 cm  
(1/4 di cerchio ø 52 cm)

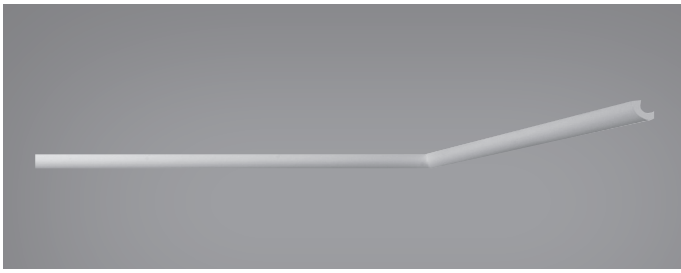


ERF803/52DP  
L.43 x p. 4 x H. 23,5 cm  
(1/4 di cerchio ø 52 cm)



ERF803/52L  
L. 40 x H. 10  
(1/4 di cerchio ø 52 cm)

# ITALSTYL



I816-D20N



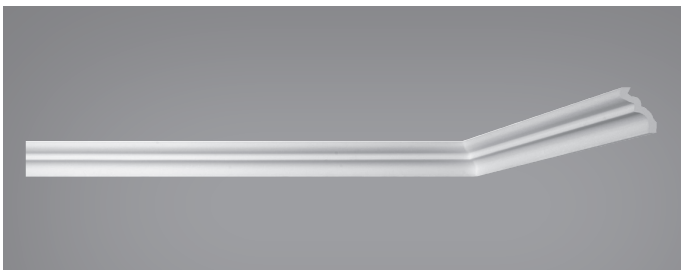
I821-D25N



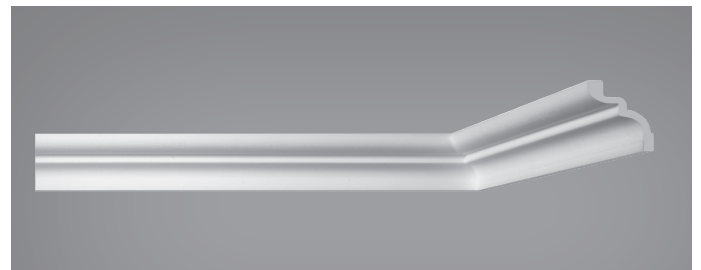
I826-S25N



I836-S35N



I856-S50N



I886-S80N

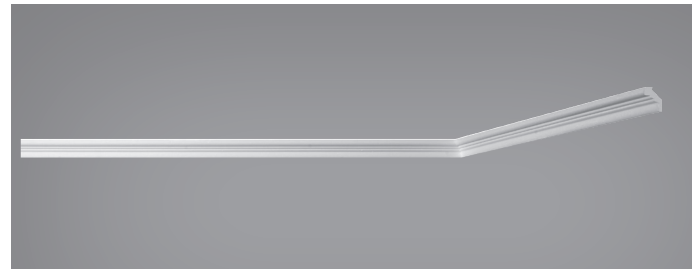
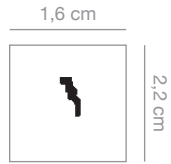


Dott. Ing. Bovelacci Marco 2019

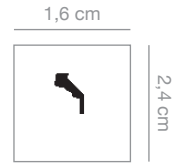




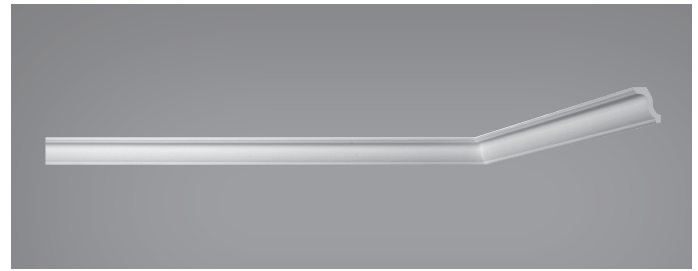
1883-S22



1845-S24



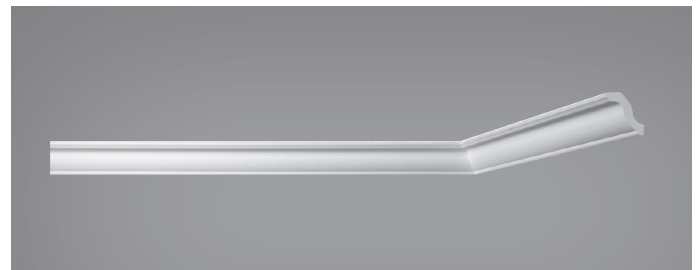
1865-G40



1835-H36



1867-G50



1837-H50

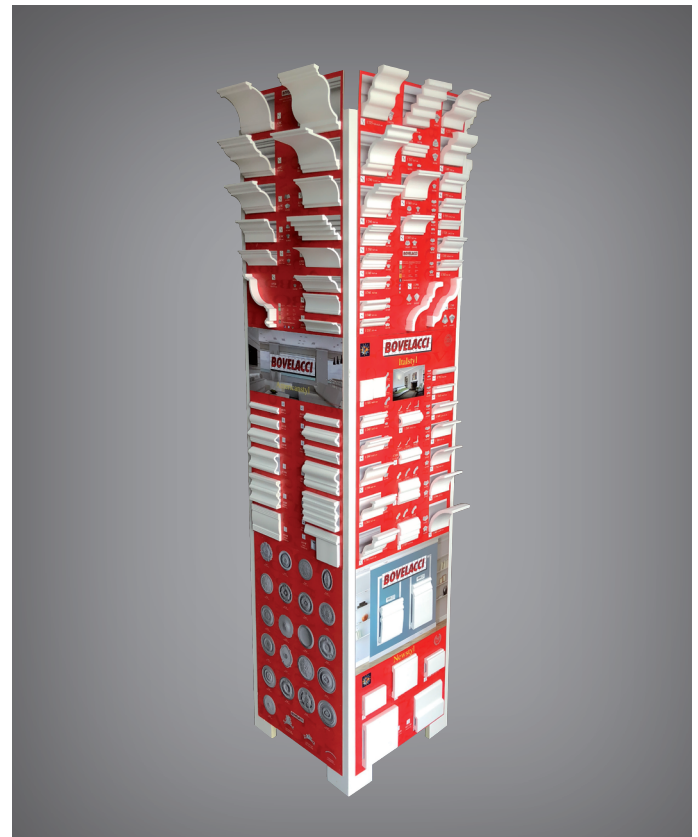


1847-S40

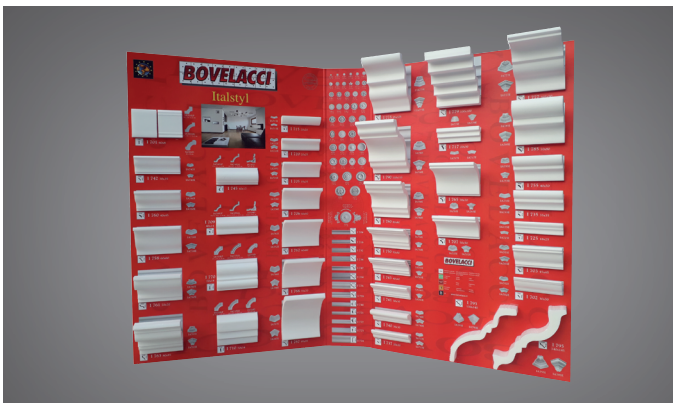




VALIGIA DECO DVAD  
Italstyl, Extrastyl, Eurostyl



DTOC19 TOTEM COLLECTION 2019  
Classicstyl - Americanstyl - Newstyl Brickstyl - Italstyl - Rosoni



DDI ITALSTYL

## LE ISTRUZIONI PER IL MONTAGGIO

## ASSEMBLING INSTRUCTIONS

## VERARBEITUNGSTIPS

## INSTRUCCIONES DE MONTAJE

È preferibile posare le cornici, gli angoli ed i rosoni prima di tappezzare le pareti. I prodotti devono essere applicati su pareti asciutte, pulite e sgrassate. Sono sufficienti i seguenti accessori: cassetta per taglio, sega speciale Bovelacci, Eurocoll Plus, spatola, spugna, pittura, pennelli, cutter e metro.

We suggest to install mouldings, corners and roses before wallpapering. Items must be applied on dry clean and ungreased surfaces. You need only the following tools: mitre-box, Bovelacci special saw, glue Eurocoll Plus, spatula, sponge, paint, brush, cutter and metre.

Wir empfehlen die Zierprofile, Ecken, Rosetten nach Möglichkeit vor den Tapezierarbeiten zu verkleben. Der Untergrund muss saugfähig, sauber, trocken und staubfrei sein. Folgende Werkzeuge werden benötigt: Gehrungslade, Bovelacci-Spezialsäge, Eurocoll Plus-Klebstoff, Spachtel, Schwamm, Farbe, Pinsel, Cuttermesser und ein Zollstock.

Aconsejamos pegar las molduras, los elementos angulares y los rosetones antes del papel tapiz. Los productos tienen que ser instalados en paredes secas, limpias y sin grasa. Son suficientes los siguientes accesorios: caja de cortar, sierra especial Bovelacci, Eurocol Plus, espátula, esponja, pintura, pinceles, cortador y metro.

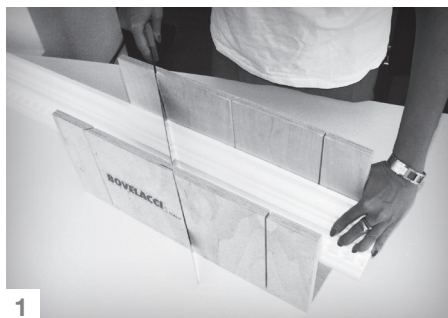


## LE CORNICI

## MOULDINGS

## ZIERLEISTEN

## LAS MOLDURAS



1



2



3



4



5



6

## Classicstyl - Americanstyl - Newstyl - Profistyl - Italstyl - Eurostyl - Extrastyl

1. Iniziare a tagliare le cornici in modo da realizzare gli angoli che vi servono. Controllate che combinino.

2. Stendere la colla speciale Eurocoll Plus su entrambe le superfici posteriori dell'asta che andranno a contatto con la parete o il soffitto, nonchè fra le giunture (incidenza media: 1 cart. x 8 ml).

Classicstyl - Americanstyl - Newstyl  
Per l'installazione utilizzare Eurocoll Plus e chiodini in acciaio senza testa.

3. Applicare la cornice alla parete con una leggera pressione. Dopo una settimana riempite con la colla ogni giuntura o spazio.

4. Togliete l'eccesso di colla con l'aiuto di una spatola.

5. Pulite quindi con l'aiuto di una spugna.

6. Lasciate asciugare e rifinite con vernice a base d'acqua.

1. Cut straight ends to make the type of corners you need. Check fit.

2. Apply the special glue Eurocoll Plus on both back surfaces of the stick meant to lean on the wall and inside the joint (average incidence: 1 cart. x 8 ml).

Classicstyl - Americanstyl - Newstyl  
For installation use Eurocoll Plus and steel nails without head.

3. Press pieces into the corner with a light pressure. After a week fill all joints and gaps with glue.

4. Remove glue in excess by using a spatula.

5. Wipe smooth with a clean damp sponge.

6. Let dry and apply water-based paint.

1. Beim Schneiden der Gehrung ist unbedingt darauf zu achten, dass die "Deckenklebefläche" des Zierprofils auf dem Boden und die "Wandklebefläche" an der Innenwand der Gehrungslade liegt.

2. Nachdem die Gehrung auf Passgenauigkeit geprüft wurde, wird der Klebstoff Eurocoll Plus auf beide Klebeflächen und im Stoßbereich mit der Kartusche oder mit dem Spachtel aufgetragen (durchschnittlicher Verbrauch: 1 Kart. x 8 ml).

Classicstyl - Americanstyl - Newstyl  
Zum Fixieren der Leisten können Sie Eurocoll Plus und Stahlstifte verwenden.

3. Das Zierprofil passgenau ansetzen und vorsichtig andrücken.  
Nach einer Woche alle Fugen und Stöße mit Klebstoff füllen.

4. Überschüssigen Klebstoff mit einem Spachtel sofort entfernen.

5. Anschließend Klebstoffreste mit einem feuchten Schwamm sofort abwaschen.

6. Die Zierprofile können nach einer Trocknungszeit von ca. 24 Std. mit Dispersionsfarbe oder Acryllack überstrichen werden.

1. Cortar las molduras para obtener los ángulos que necesita. Asegurarse que combinen.

2. Aplicar el adhesivo especial Eurocoll Plus en ambas las superficies posteriores de la barras que se pegarán a la pared o al techo y entre las juntas. (incidencia media: 1 cartucho x 8 ml).

Classicstyl - Americanstyl - Newstyl.  
Para la aplicación usar Eurocoll Plus y clavos de acero sin cabeza

3. Presionar levemente la moldura a la pared. Después de una semana sellar cada junta y espacio con Eurocoll Plus.

4. Quitar el exceso de cola con una espátula

5. Limpiar usando esponja

6. Dejar que seque y terminar con pintura a base de agua.



**BOVELACCI**

Bovelacci S.r.l. - via del Commercio 5 - 47122 Forlì - Italy

Tel. +39 0543 811611 Fax +39 0543 721127

[bovelacci@bovelacci.it](mailto:bovelacci@bovelacci.it) [www.bovelaccidecor.com](http://www.bovelaccidecor.com)

per carico merci: Bovelacci Cargo - Via A. Einstein, 43 - 47122 Forlì - Italy

